

Brochure 8.5" x 11" (Roll Fold)

DELETE THIS LAYER

BEFORE SUBMITTING

FINISHED SIZE: 11" x 8.5"

WITH BLEED: 11.125" x 8.625"

Please leave a 0.125" total bleed

0.0625" for each side

FIRST FOLD FROM LEFT TRIM - 3.58"

Fold Line

Fold Line

3.58"

3.70"

3.72"

Green Line is SAFETY Line

Green Line is SAFETY Line

Green Line is SAFETY Line

All important information that is not getting cut / fold should be inside this line

All important information that is not getting cut / fold should be inside this line

All important information that is not getting cut / fold should be inside this line

Blue Line is END OF BLEED Line

Background image / colour / artwork should extend to this line

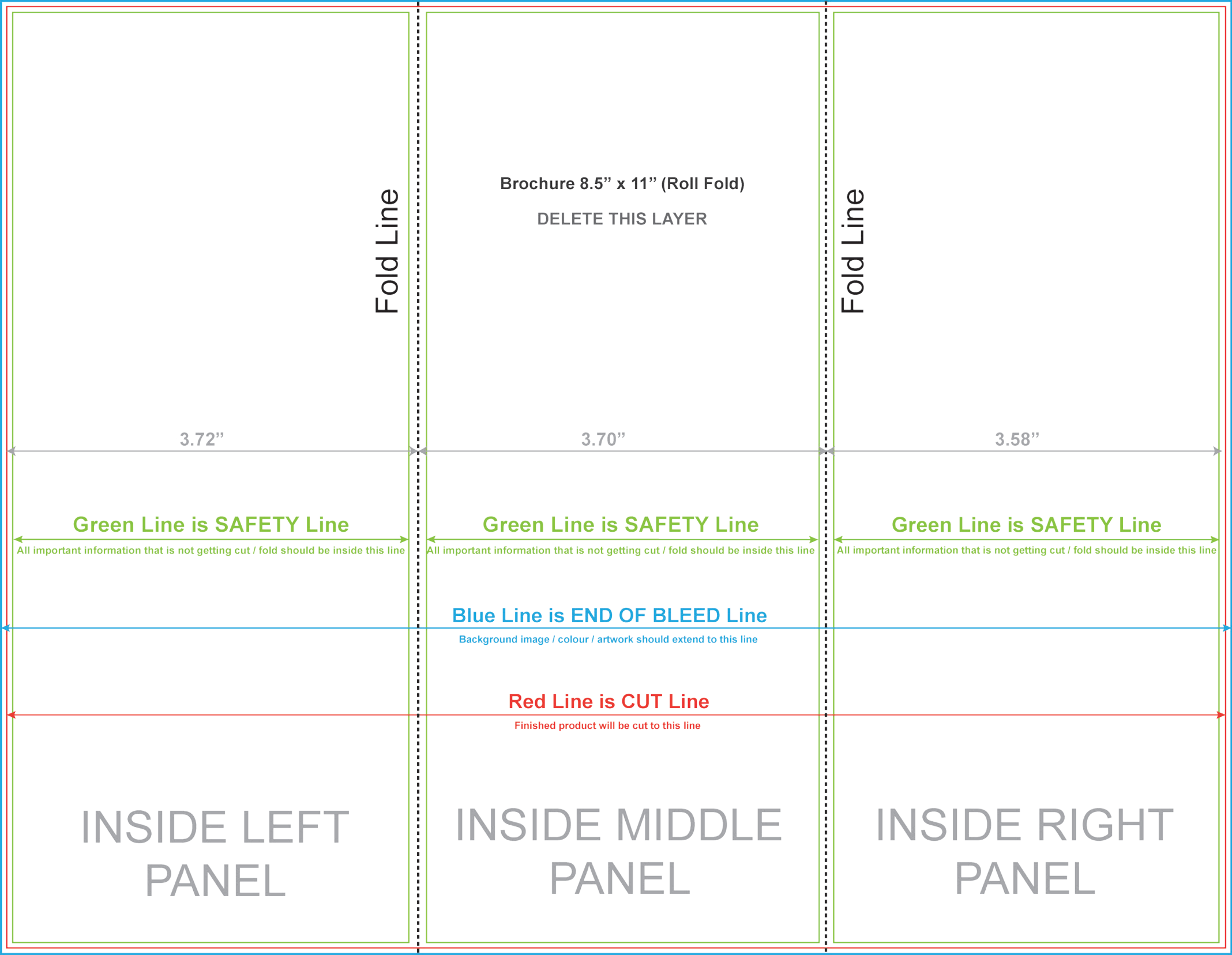
Red Line is CUT Line

Finished product will be cut to this line

OUTSIDE UNDER
PANEL

OUTSIDE BACK
PANEL

OUTSIDE FRONT
PANEL



Fold Line

Fold Line

Brochure 8.5" x 11" (Roll Fold)

DELETE THIS LAYER

3.72"

3.70"

3.58"

Green Line is SAFETY Line

Green Line is SAFETY Line

Green Line is SAFETY Line

All important information that is not getting cut / fold should be inside this line

All important information that is not getting cut / fold should be inside this line

All important information that is not getting cut / fold should be inside this line

Blue Line is END OF BLEED Line

Background image / colour / artwork should extend to this line

Red Line is CUT Line

Finished product will be cut to this line

INSIDE LEFT
PANEL

INSIDE MIDDLE
PANEL

INSIDE RIGHT
PANEL